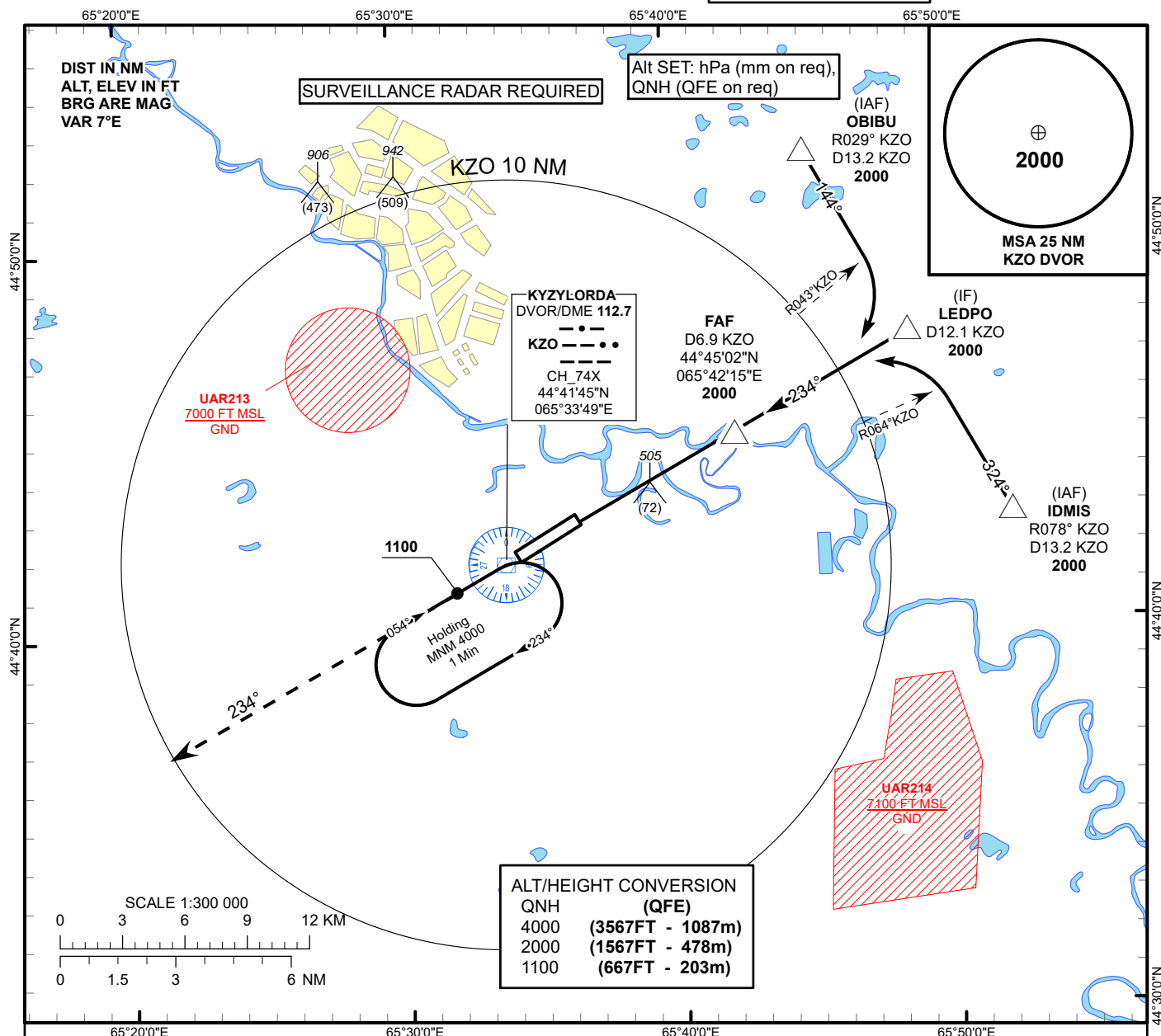


INSTRUMENT
APPROACH
CHART - ICAO

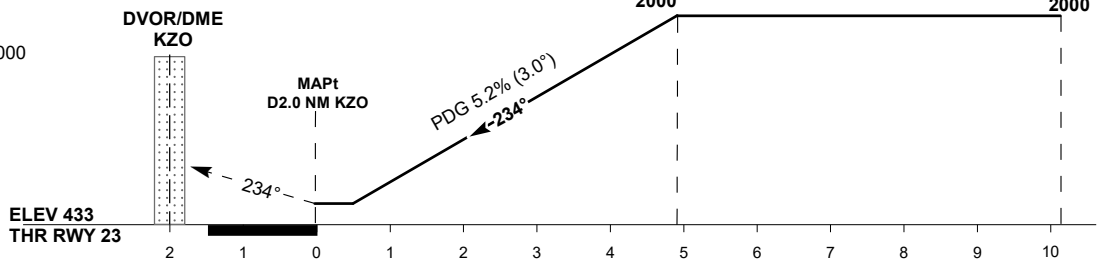
AERODROME ELEV **433 FT**
HEIGHTS RELATED TO
AD ELEV

KYZYLORDA TOWER 120.9
KYZYLORDA ATIS (EN) 134.9
KYZYLORDA ATIS (RU) 122.9

KYZYLORDA
VOR/DME Y
RWY 23



MISSED APPROACH
Climb on track 234° to 2000.
After passing 1100 radar
vectoring will be provided.
RADIO FAILURE:
In the case of RCF
climb on track 234° to 2000
outbound to 5.0 KZO.
Turn left, climb to 4000
to KZO and join to
holding pattern.



Aircraft Category		A	B	C	D	DIST to THR	NM	1.0	2.0	3.0	4.0	4.8	
Straight-in Approach OCA/H						DME KZO	NM	3.0	4.0	5.0	6.0	6.9	
	VOR/DME	770(330)		770(330)		ALTITUDE	FT	800	1119	1437	1756	2000	
						HEIGHT	FT	(367)	(686)	(1004)	(1323)	(1567)	
Aerodrome Operating Minima MDH ft x RVR(CMV)	VOR/DME												
						GS	Kt	80	100	120	140	160	180
						FAF-MAPt (4.8)	min:sec	3:36	2:53	2:24	2:03	1:48	1:36
						Desc.Rate(5.2%)	ft/min	420	530	630	740	840	950

KYZYLORDA
VOR/DME Y

AERONAUTICAL DATA TABULATION

VOR approach to RWY23 from OBIBU, LEDPO, IDMIS	
Fix/point	Coordinates
(FAF) D6.9 KZO	44° 45' 02.1"N 065° 42' 15.4"E
LEDPO (IF) D12.1 KZO	44° 47' 34.9"N 065° 48' 40.0"E
OBIBU (IAF) R029°KZO D13.2 KZO	44° 52' 19.1"N 065° 45' 01.5"E
IDMIS (IAF) R078°KZO D13.2KZO	44° 42' 50.7"N 065° 52' 17.8"E
THR RWY 23	44° 42' 43.85"N 065° 36' 20.40"E
KZO DVOR/DME	44° 41' 44.9"N 065° 33' 49.3"E
Final approach descent angle is 3°	